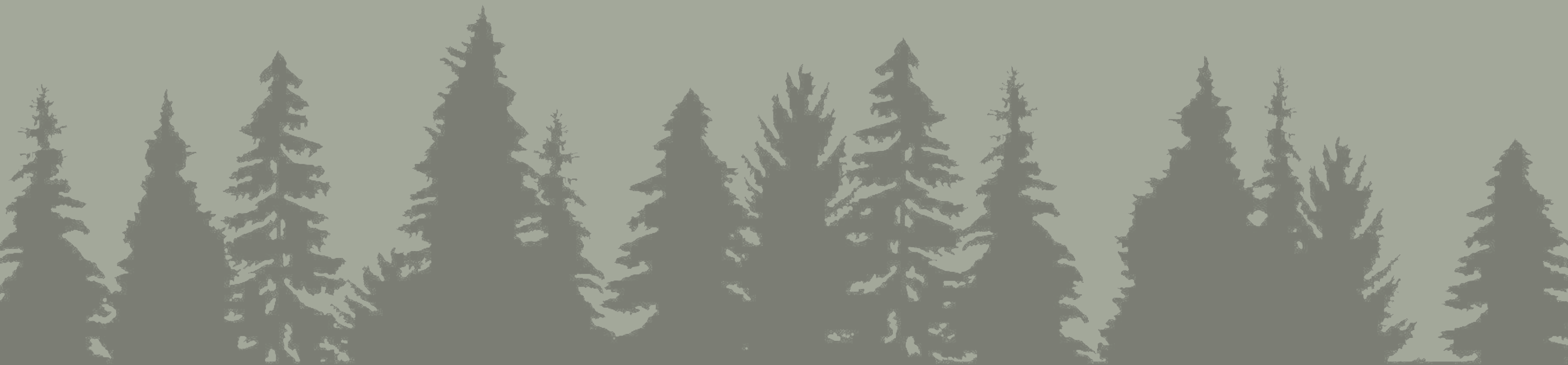


Pineview

estates



Pefka
Thessaloniki, Greece

Welcome to

an exceptional residential complex located in the serene area of Pefka, Thessaloniki. Nestled within a lush forest and offering breathtaking views of the city, this complex combines the tranquility of nature with the convenience of urban living.

carefully crafted by

PP arch

3D Design & Architecture



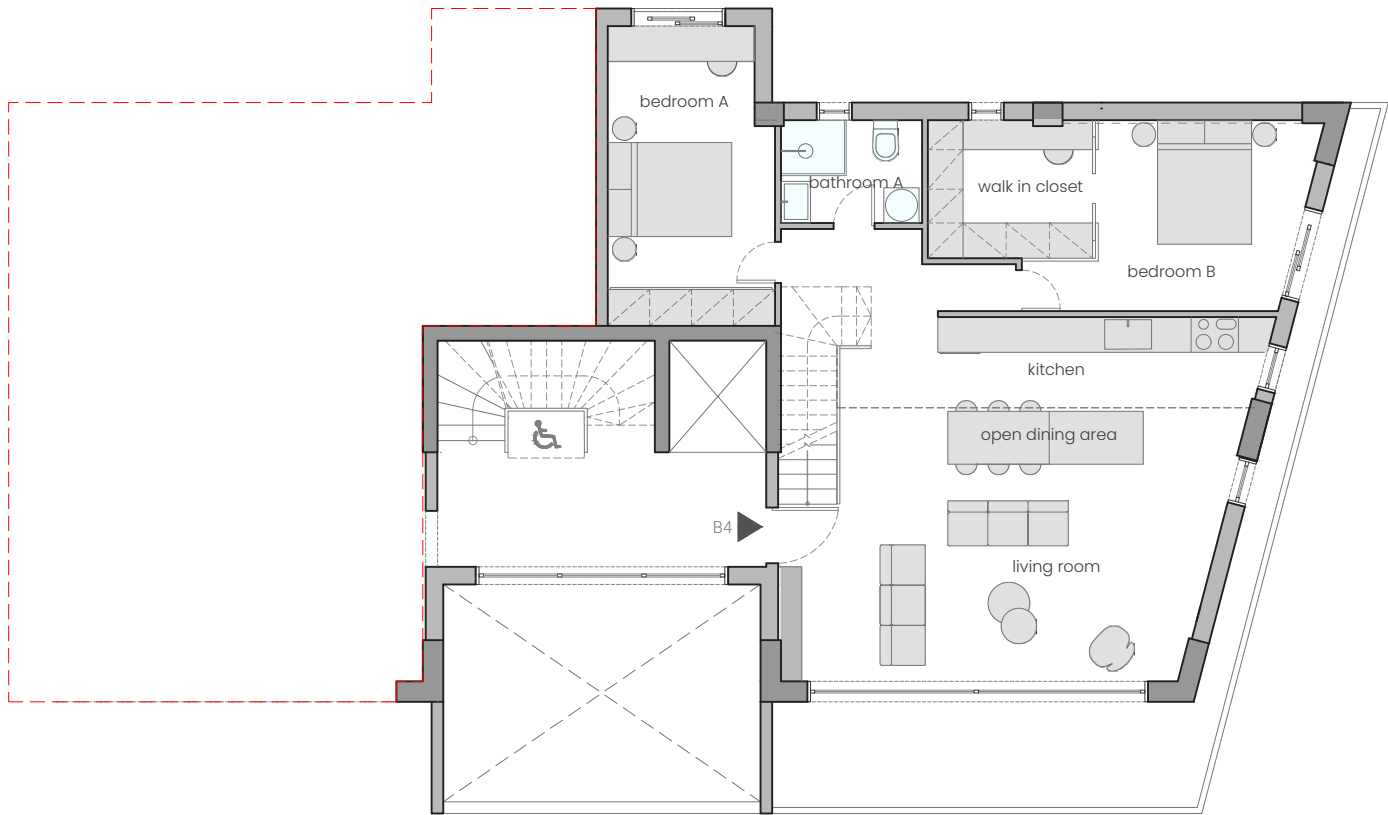
ARCHON DEVELOPERS

Pineview

estates



1st floor



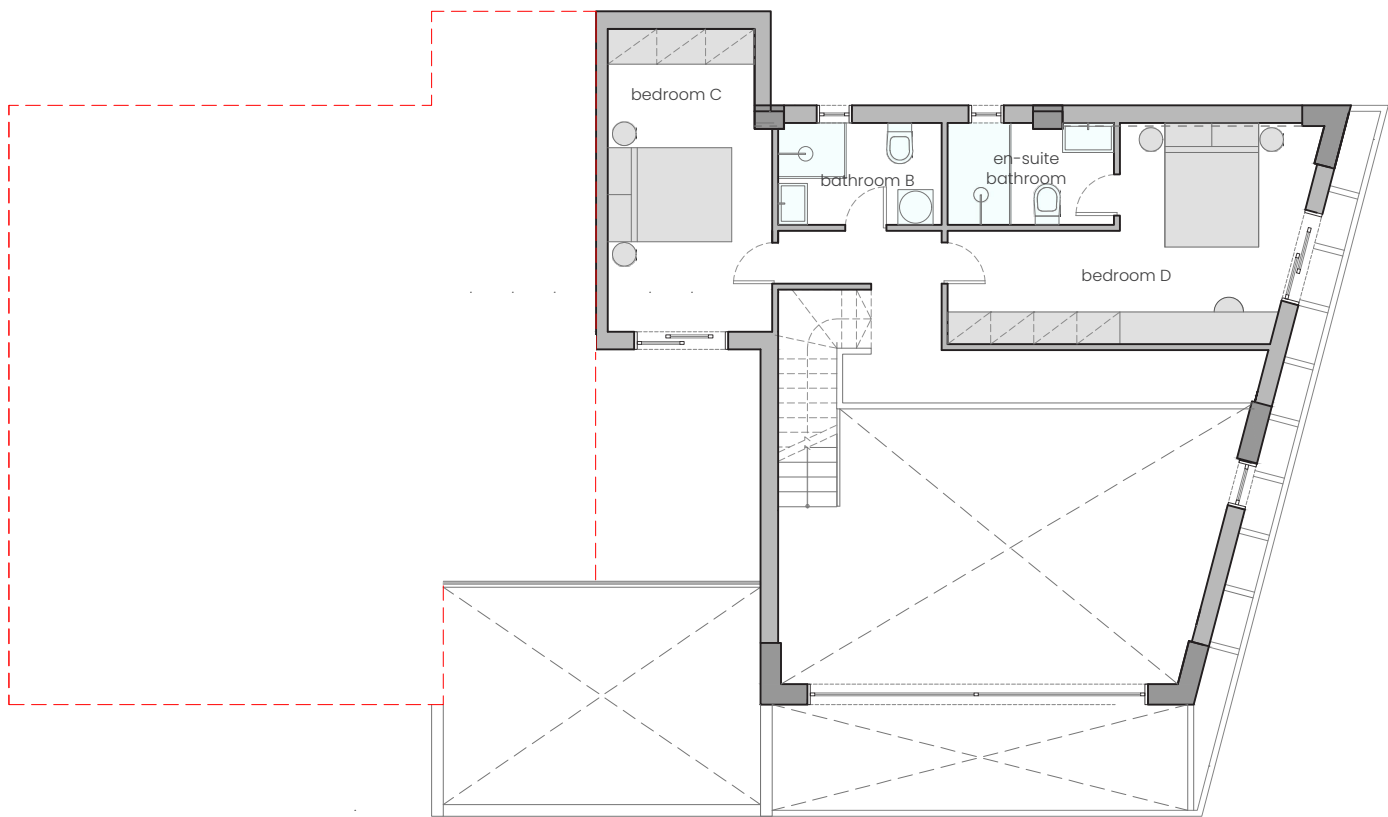
B4_Loft

indoor area: 148.55 m2

1st floor: 90.88 m2

- 1 bedroom with walk-in-closet
- 1 bedroom
- 1 bathroom
- living room
- dining area
- kitchen

2nd floor



2nd floor: 57.67 m2

- 1 bedroom with ensuite bathroom
- 1 bedroom
- 1 bathroom

outdoor area: 21.00 m2

1st floor: 21.00 m2

Private Balcony

A Unique Loft Residence

This loft spans the 1st and 2nd floors, featuring a spacious open-plan living and kitchen area on the first floor.

The living room is bright and inviting, perfect for relaxation or entertaining, while the modern kitchen boasts premium finishes. Two comfortable bedrooms are also on this floor, along with a sleek bathroom.

Upstairs, one of the spacious bedrooms includes an ensuite bathroom, offering added privacy and convenience. The second bedroom on the upper floor completes this thoughtfully designed home.





Floor to Ceiling Windows:

A Gateway to Nature

The living room is a showcase of modern design, featuring expansive floor-to-ceiling windows that bathe the space in natural light and provide uninterrupted views of the surrounding forest.

The minimalist aesthetic is complemented by high ceilings and clean lines, creating an airy and inviting ambiance.

A central focus is placed on comfort and style, with ample space for cozy seating arrangements and curated lighting fixtures that enhance the warm, sophisticated atmosphere.





Kitchen:

Where Style Meets
Functionality

The heart of this home, the kitchen, is a seamless blend of modern elegance and practical design.

Featuring premium materials, sleek cabinetry. It offers both beauty and functionality. Its open-plan layout connects effortlessly to the living area, making it perfect for both everyday living and entertaining guests.

Details Matter:

Elevating everyday living

Every detail in this home has been meticulously crafted, with the kitchen showcasing stainless steel cabinetry, the marble countertops, and a sleek backsplash. This combination of materials creates a modern, durable, and effortlessly elegant space.





Luxury Meets Minimalism

The interior design of the home embodies the principles of minimalist luxury. Clean, straight lines, neutral tones, and premium materials come together to create an aesthetic that is both timeless and sophisticated.

A stylish staircase from the living room leads to the upper floor, where two additional generously sized bedrooms await. These rooms are designed with comfort in mind and are complemented by a sleek, modern bathroom equipped with high-quality fixtures.





Bedroom:

A Sanctuary of
Comfort and Style

The bedrooms are designed as peaceful retreats, featuring spacious layouts and high-end finishes. Large windows allow natural light to flood the rooms, creating a bright and serene atmosphere.

With a minimalist design and quality materials, the bedrooms offer comfort and privacy, providing the perfect space to relax and unwind.



Bathroom:

A Modern Escape

The bathroom continues the home's theme of minimalist luxury with sleek, contemporary fixtures and premium finishes.

Featuring high-quality tiles, elegant vanities, and spacious walk-in showers, it offers both style and practicality. Every detail, from the modern lighting to the fine fixtures, is carefully selected.





Minimalistic exterior and High Ceilings

The design of the complex features minimalist architectural elements with sleek, clean lines that continue from the interior to the exterior. High ceilings further amplify the sense of space, creating an airy and open feel that is both modern and inviting.

This apartment complex offers convenient parking facilities, providing residents with easy access to secure parking spaces.

The thoughtfully designed parking area is easily accessible and is complemented by a peaceful courtyard, adding to the property's practicality and tranquil atmosphere.





The building features large windows that seamlessly integrate the indoors with the outdoors, allowing for plenty of natural light to flood the living spaces.

These expansive windows not only provide breathtaking views of the surrounding area but also enhance the sense of openness and connection to nature.





The exterior of the complex reflects the same minimalist approach as the interiors, with sleek lines and clean shapes creating a sophisticated and modern look. Thoughtfully designed to blend with the natural surroundings, the architecture highlights the simplicity and elegance of contemporary living connection to nature.



Notes:

your personal
property consultant

Contact us
to explore this selected property and envision your future home.



Pineview

estates

